

INGENUITY FRONTIER

Engineering At Work In Northwest Minnesota

We hope you enjoy the first issue of Ingenuity Frontier News! To keep you abreast of what's happening in our region, we will be sending you quarterly newsletters. Be sure to watch for our next issue which will focus on Industry and related developments!

Deadline Fast Approaching for KERN Foundation Funding

Schools Interested in Project Lead The Way Encouraged to Apply

The Kern Family Foundation is making available up to \$2,500,000 in multi-year, competitive grants for high schools or middle schools in Iowa, Illinois, Minnesota, and Wisconsin to implement a pre-engineering program called Project Lead The Way (PLTW). Implementation may begin in fall 2006 or fall 2007. It is anticipated that 80 schools will be funded in this grant cycle.

Project Lead the Way is a 501(c)3 non-profit organization focused on preparing the future technical and engineering workforce in America. PLTW offers a middle school "Gateway to Technology" curriculum and a five-course high school curriculum. Teacher training, project-based curriculum meeting national science and math standards, equipment specifications, software, post secondary articulation, and a comprehensive support structure make PLTW an excellent program. In eight years, Project Lead The Way has grown from one school in New York to more than 1,300 schools in 45

states. For more information, see the national website at www.pltw.org.

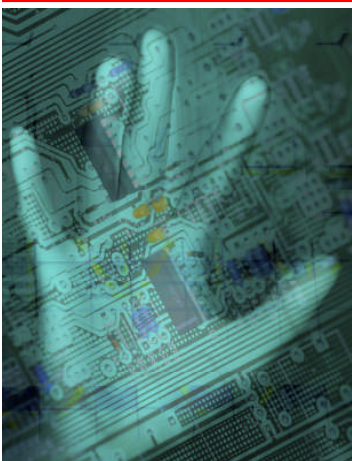
Three schools in northwest Minnesota, Bemidji, Cass Lake and Clearbrook/Gonvick

have already been awarded funding from the KERN Foundation in a prior grant round to implement PLTW curriculum.

The grant application deadline is Friday, January 27, 2006. Kirsten Melby, Director of Workforce Development for Northland College is Co-Chair of Ingenuity Frontier's Training and Education Sub-committee and is working directly with area schools. For more information about PLTW or KERN Foundation funding, call Kirsten at 218-681-0719.



Center of Excellence Awarded



On October 19, 2005, Bemidji State University was one of four Minnesota Universities to receive a prestigious Center of Excellence designation. Along with the designation is an award of funding in the amount of \$5 million over a two-year period.

The Center of Excellence is a consortium of Bemidji State University, Central Lakes College in Brainerd and Staples, Northwest Technical College in Bemidji, Northland Community and Technical College in Thief River Falls and East Grand Forks, Pine Technical College in Pine City, Saint

Paul College, St. Cloud Technical College and Minneapolis Community and Technical College.

The Consortium will address the serious shortages of highly skilled manufacturing workers now facing many Minnesota industries. By developing strong ties with K-12 education, the Consortium will help students develop strong math and science skills and engage their creativity in manufacturing through "hands-on" learning activities and summer camps. Applied research activities will offer opportunities for students and faculty at the university and colleges to design and employ best practices to stay ahead of the competition.

The result will be a labor pool of talented and well-skilled students, development of innovative processes and enhanced ability of Minnesota manufacturers to be highly competitive in the global economy.

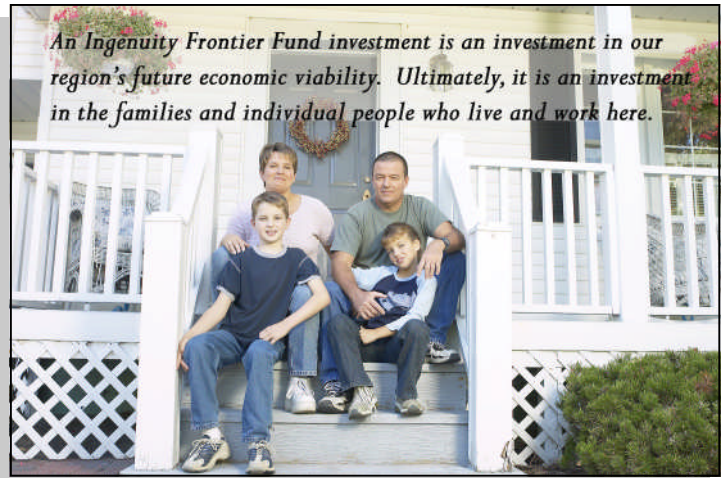
IF Capital Campaign Underway

The Northwest Minnesota Foundation has established the Ingenuity Frontier Fund as one of its key components. Through this fund, charitable contributions and corporate investments will help to make the vision of Ingenuity Frontier a reality.

The Ingenuity Frontier Fund will rely on the expertise of an advisory committee to oversee the use of its resources. Administration of the fund will be the responsibility of the Foundation.

The overall target for Ingenuity Frontier is to raise \$2.6 Million over the course of the next two years, which will help to meet the three goals which have been outlined:

- ◆ Increase the pool of manufacturing and engineering talent in northwest Minnesota: \$900,000
- ◆ Promote a culture of manufacturing innovation in northwest Minnesota: \$1,300,000
- ◆ Brand northwest Minnesota as a hub of manufacturing and engineering talent and innovation: \$400,000



To date, \$525,000 has already been raised, just over 20% of the total goal.

IF Hires Project Coordinator



Michelle Landsverk was contracted to serve as Project Coordinator for Ingenuity Frontier in November of 2005.

As IF Project Coordinator, Michelle's responsibilities include coordination of the core-planning team, communications, meeting facilitation, overseeing implementation of the IF marketing campaign, reporting, fundraising and assisting the

Ingenuity Frontier Fund advisory committee in developing and maintaining guidelines, procedures and work plans.

In July of 2005, Michelle launched her own consulting

business, Landsverk and Associates, Inc. As part of her business, she works with organizations, communities and businesses who want to increase effectiveness and who want to build their corporate brand.

Prior to starting her business, Michelle was employed by The People Connection as their Director of Operations. Her responsibilities there included program oversight, strategic planning and marketing.

Michelle makes her home in Fosston with her husband, Ronn, who operates a large family-owned dairy and grain operation.

If you would like to contact her directly, she may be reached by calling 218-435-2834, or by emailing michelle@michellelandsverk.com

Who is Ingenuity Frontier?

Ingenuity Frontier is a collaborative project of the Northwest Minnesota Foundation, Bemidji State University, Headwaters Regional Development Commission, Northland College and the Department of Employment and Economic Development. These partners are working collaboratively to increase the pool of manufacturing and engineering talent in northwest Minnesota, promote a culture of innovation in northwest Minnesota and brand the region as a hub of engineering talent and innovation.

For more information about Ingenuity Frontier, call the Northwest Minnesota Foundation: 1-800-659-7859